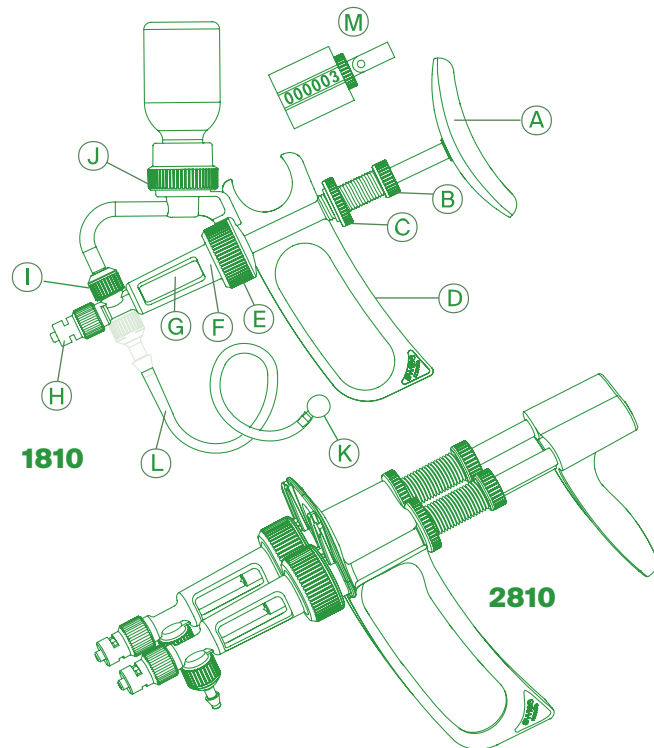


Quick Guide



Socorex® ultra syringes 1810 / 2810



- A** Piston rod with handpiece **B** Volume setting socket
C Volume locking nut **D** Handle **E** Casing nut **F** Casing
G Barrel **H** LL nozzle valve **I** Intake valve **J** Vial holder
K Sinkers **L** Tubing **M** Abacus™ shot counter

Package contents

Set of spares for valves (2x for 2810), Quick Guide and:

1810.1, 2810.1: syringe with vial holder set (vial holder, locking ring, bottle lock, tube connector, feed needle, rubber washer).

1810.2, 2810.2: syringe with feed tube set (silicone tubing, sinker, aspiration and vent cannulas).

1810.6: feed tube set with Abacus™ shot counter.

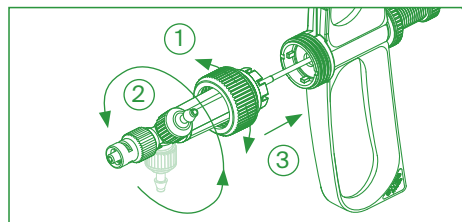
⚠ Safety precautions

- Read carefully and observe manufacturer's instructions and guidelines.
- Follow instructions for proper use of injectables.
- Before each use, check the instrument for perfect working condition.
- Purge, rinse, and dry the instrument carefully after each use.
- Never try to separate blocked parts by using force.
- Repeated use of the same needle may carry over contaminations to other animals.

- Instrument manufacturer cannot be made responsible for needle breakage during use.
- Mind possible hand fatigue and its medical consequences.
- Do not use syringe for purposes other than animal injections.
- A saline environment may hasten replacement of instrument parts.
- Use only original spare parts.

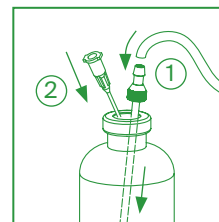
Step-by-step instructions

1. Body positioning



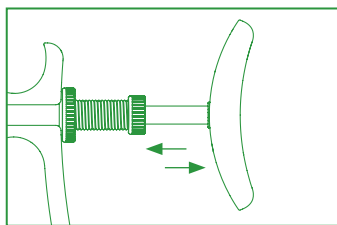
1) Unscrew casing nut. Pull. 2) Adjust body position to one of 8 possible angles. Twist glass cylinder to see graduation. 3) Push. Retighten casing nut.

2. Installing tubing...

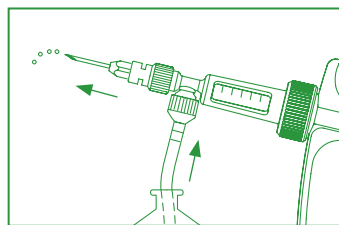


1) Insert feed needle. Connect tubing.
 2) Insert vent cannula.

3. Priming

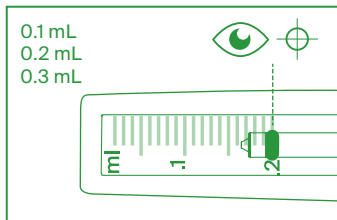


Activate handle until liquid reaches needle.

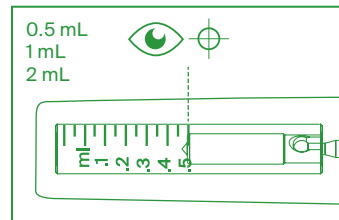


Activate in vertical position to expel liquid and eliminate air bubbles.

5. Volume reading

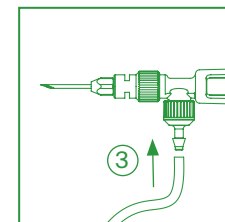


O-ring centered on graduation.

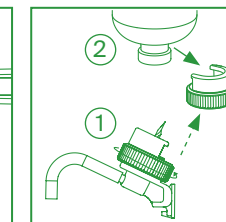


Plunger edge on graduation.

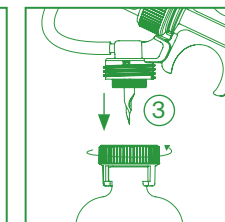
... or vial holder



3) Connect tubing to syringe.

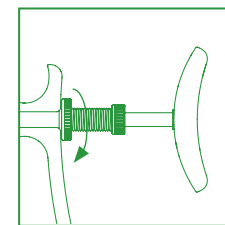


1) Remove bottle lock.
 2) Insert bottle into lock.

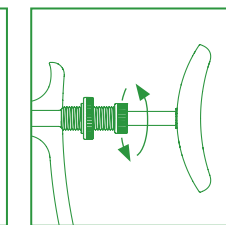


3) Connect vial holder to syringe.

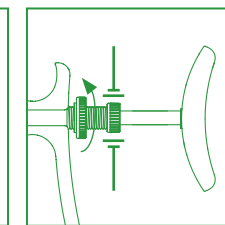
4. Volume setting



Unscrew volume nut.

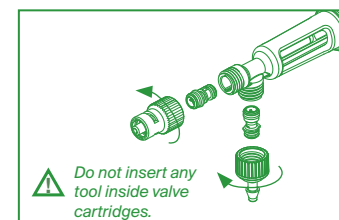


Turn socket to move plunger and choose the desired volume.

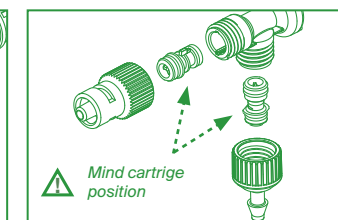


Hold socket and tighten locking nut.

In case of clogged valve



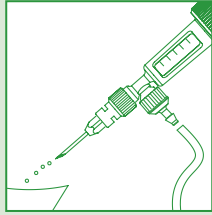
Unscrew and wash valves.



Screw back on according to cartridge position.

Daily maintenance

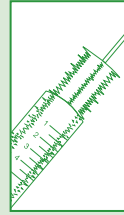
Purging, disassembling and cleaning



Recover vaccine.
Rinse with water /
detergent.

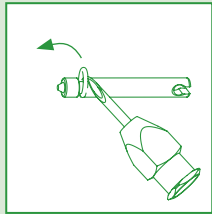


Unscrew nut and
separate parts.

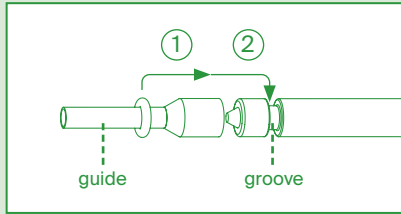


Clean and
dry parts.

Changing plunger O-ring

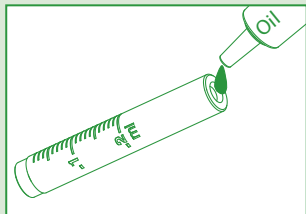


Remove carefully.

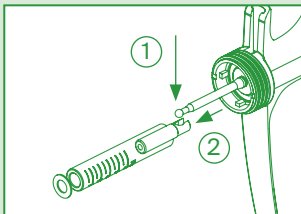


1) Place O-ring on guide. 2) Roll new
lubricated O-ring into groove.

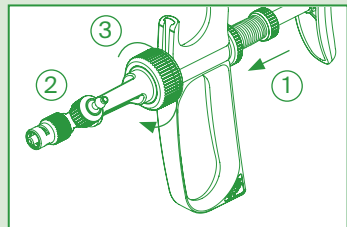
Reassembling



Lubricate barrel entry.



Mount plunger in barrel. Con-
nect rod. Add barrel washer.



1) Activate syringe.
2) Attach casing.
3) Screw on casing nut.

Most common troubleshooting

Observation	Possible cause	Solution
Erratic operation	Syringe used without liquid inside	Use with liquid
	Plunger, O-ring and barrel not properly lubricated	Use appropriate lubricant
Blocked valve	Valve parts blocked by residue	Disassemble and clean; soak valve and remove residue
Leaking valve	Residue in valve prevents tightness	Clean valve
	Damaged valve	Replace part
Inadequate performance	Priming not completed, air bubble in system	Prime properly
	Barrel washer not positioned correctly or missing	Change barrel washer
Liquid accumulation behind plunger	0.1 mL – 0.3 mL models, damaged O-ring or missing	Check plunger, change O-ring
	0.5, 1 and 2 mL models, this may occur after long injection series	Remove liquid when doing maintenance
Plunger blocked	Syringe stored without cleaning	Do not apply force to unlock. Disassemble and soak syringe in warm water and separate plunger parts

Related spares and accessories

Description	Volume range	Packaging	Cat. No.
Optional one needle manifold	For all Twin syringes	1 pc	1.287.685
Spare parts set: 2 cartridges (inlet/outlet valves), 2 barrel washers, 2 plunger O-rings, 1 guide for O-ring	0.1 mL	1 bag	1.1810.72001
	0.2 mL	1 bag	1.1810.72002
	0.3 mL	1 bag	1.1810.72003
Spare parts set: 2 cartridges (inlet/ outlet valves) and 2 barrel washers.	0.5 mL	1 bag	1.1810.72005
	1 mL	1 bag	1.1810.72001
	2 mL	1 bag	1.1810.7202
Spare glass barrels	0.1 mL	6 / pk	01810.001
	0.2 mL	6 / pk	01810.002
	0.3 mL	6 / pk	01810.003
	0.5 mL	6 / pk	01810.005
	1 mL	6 / pk	01810.01
	2 mL	6 / pk	01810.02
Feed tubing, cut	0.1, 0.2, 0.3 mL	1m / pk	1810.705
	0.5, 1, 2 mL	1m / pk	187.705
Feed tubing, uncut	0.1, 0.2, 0.3 mL	by the meter	1810.710
	0.5, 1, 2 mL	by the meter	187.710
Vial holder conversion set	0.3-10 mL	1 / pk	1.1810.010
Nylon brush for barrel cleaning	0.5 mL	6 / pk	1.170.301
	1 and 2 mL	6 / pk	1.170.305
Premium lubricant ABF™	70 mL	1 / pk	1.170.705

Scan to access:

Stainless steel needles



Video channel



Operating instructions



EN / DE / FR

IT / ES / PT