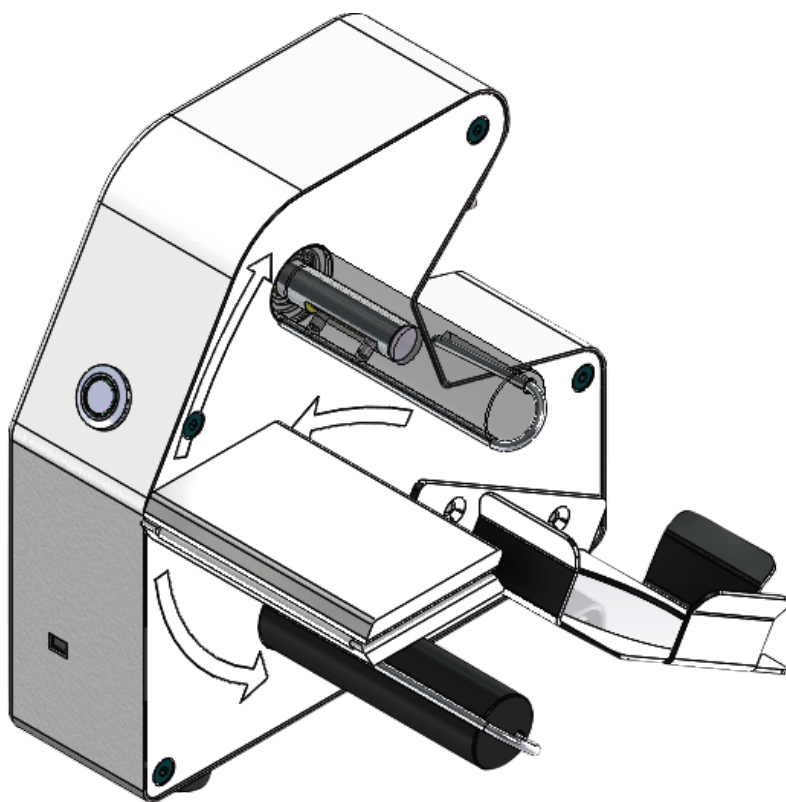


MEMBRANE DISPENSER

Quick Use Manual

MFDISP006



Please read this instruction before use

Overview

MFDISP006 is a supporting machine for continuous packaging of grille film, which can automatically remove the aseptic packaging of grille film and realize automatic induction film taking.

Advantage:

- Automatic induction distribution grille film;
- Small design, less space, easy to carry;
- Fast and reliable transfer of grid film;
- Easy loading and unloading of grille film paper tape.

Notice

- In order to prevent miscontact, it is recommended to place the film separator outside the operating range of 10cm.
- Please turn off the power switch and remove the power adapter to avoid danger and miscontact with the infrared sensor and waste the grille film, when the instrument moves or after use!
- The surface of the instrument can be wiped with common disinfectants (75% ethanol), and can withstand ultraviolet disinfection, but can not withstand gasification hydrogen peroxide disinfection, and can not be used in the isolator! Do not spray disinfectants directly in the infrared sensing area, in order to avoid affecting the sensing function!

Technical parameters

Size(length * width * height, mm)		170*200*200
Weight(kg)		1.85
Material		Stainless steel
Start modes		infrared induction
Film release velocity		average 3 seconds/piece
Power AC adapter	input voltage	100-240V
	input current	50/60Hz 1.5A Max
	output voltage	12.0V
	output current	3.0A
	power	36.0W

Structure

The product structure diagram is shown in Fig.1 and Fig.2

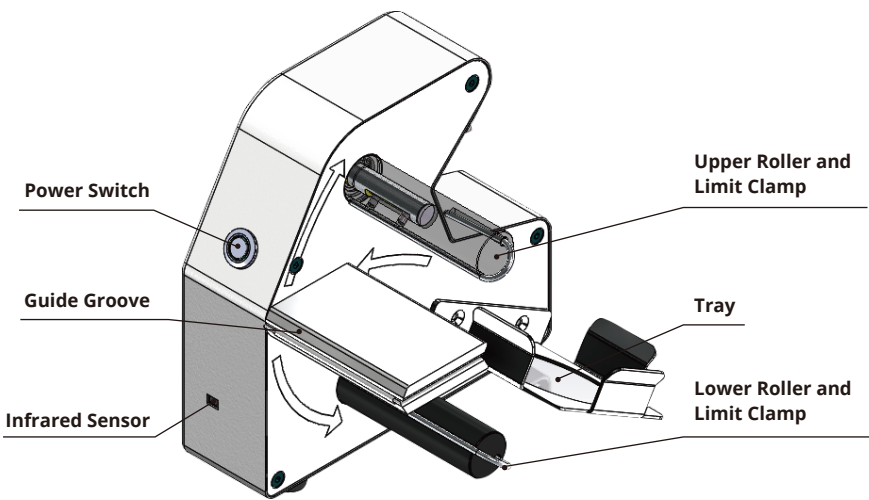


Fig.1

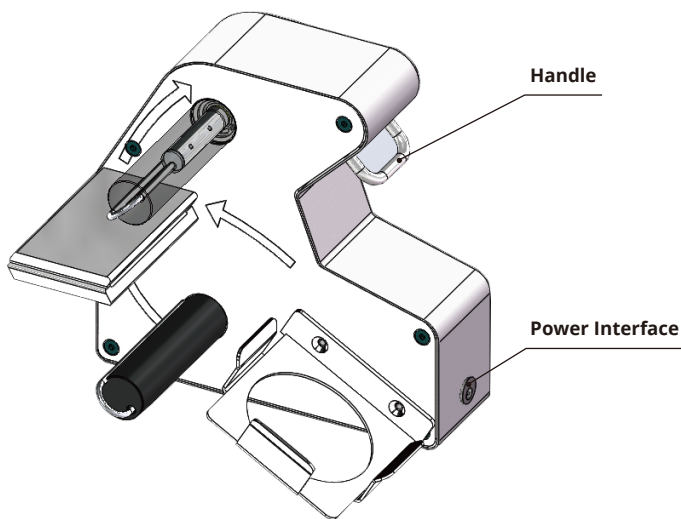


Fig.2

Quick User Guide

1. Power-on test

Take out the instrument and related accessories, connect the power adapter, press the power switch, and the green indicator will light up(Fig.3). When the hand passes through the infrared sensing area, the upper and lower roller shafts rotate simultaneously. If no abnormal condition, install the filter membrane.



Fig.3

2. Install the filter membrane

Notice: Do not turn on the power supply before the installation of the filter, in case of miscontact with the infrared sensor resulting in waste of the filter!

- Take out the suitable continuous packaging of the grille film(Fig.4). Remove the side cover along the dotted line(Fig.5).
- Place the continuous packaging upside down on the tray with the opening facing forward(Fig.6).
- Follow the arrow on the continuous packaging grille film to remove a section. Pass through the guide groove with the transparent film facing up and the bottom paper facing down. Remove limit clamps on upper and lower rollers. Rip the grille film package, wrap the upper transparent film and bottom paper around clockwise according to the direction of the film splitter shell, and use a limit clamp to fix(Fig.7 and Fig.8).



Fig.4



Fig.5



Fig.6



Fig.7



Fig.8

Notice: If the transparent film surface and bottom paper surface are too loose after winding, it can be adjusted by manually turning the roller.

3. Infrared sensor

Use the hand in the infrared sensor switch 0~50mm and the membrane will be removed automatically(Fig.9). To prevent misoperation, only one film removal operation is triggered when the hand is stationary in front of the infrared sensor.



Fig.9